

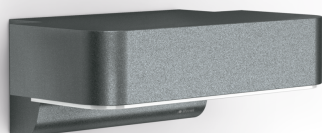
Sensor-switched LED outdoor light

L 800 SC bugfriendly

Anthracite

EAN 4007841 091361

Article number 091361



Function description

The L 800 SC bugfriendly combines modern design, intelligent sensor technology and extra warm 1800 K amber light for insect-friendly, low-glare outdoor illumination. The invisible iHF sensor detects movement within 1–5 m at a 160° angle. The high-quality STEINEL LED lighting system (7,7 W, 428 lm) provides efficient, glare-free downlighting and smart features such as adjustable basic and main light levels. Via the STEINEL Connect app, the light can be wirelessly networked, configured and easily controlled. Made from durable materials, the L 800 SC bugfriendly sets a stylish highlight on any house wall.

Technical specifications

Dimensions (L x W x H)	146 x 230 x 88 mm
With lamp	Yes, STEINEL LED system
Manufacturer's Warranty	3 years
Settings via	App, Bluetooth Mesh
With remote control	No
Version	Anthracite
PU1, EAN	4007841091361
Application, place	Outdoors
Application, room	garden, front door, courtyard & driveway, all round the building, terrace / balcony
Colour	Anthracite
includes sheet of self-adhesive numbers	No
Package content	1
Installation site	wall
Impact resistance	IK03

Transmitter range	30 m
Transmitter power	< 1 mW
Luminous flux total product	428 lm
Measured luminous flux (360°)	428 lm
Total product efficiency	56 lm/W
Colour temperature	1800 K
Colour variation LED	SDCM3
Lamp	LED cannot be replaced
Service life LED L70B50 (25°)	> 60000 h
Base	without
LED cooling system	Active and Passive Thermo Control
Soft light start	Yes
Continuous light	selectable
Functions	Motions sensor
Twilight setting	2 – 2000 lx
Time setting	5 s – 60 Min.

<https://www.steinel.de>

Subject to technical modifications

01.2026 Page 1 from 3

Sensor-switched LED outdoor light

L 800 SC bugfriendly

Anthracite

EAN 4007841 091361

Article number 091361



Technical specifications

IP-rating	IP44
Protection class	II
Ambient temperature	from -20 up to 40 °C
Housing material	Aluminium
Cover material	Plastic, opal
Mains power supply	220 – 240 V / 50 – 60 Hz
Output	7,7 W
Average rated life expectancy of power supply unit at 25°C	> 60000 h
Mounting height max.	2,50 m
Slave modeselectable	Yes
Sneak-by guard	No
Capability of masking out individual segments	No
Electronic scalability	Yes
Mechanical scalability	No
Reach, detail	Detection zone adjustable on 2 axes
Reach, radial	r = 5 m (35 m ²)
Reach, tangential	r = 5 m (35 m ²)
Photo-cell controller	Yes

Basic light level function	Yes
Basic light level function time	OFF, Brightness-controlled, 10 sec - 60 min
Main light adjustable	0 - 100 %
Twilight setting TEACH	Yes
Interconnection	No
Type of interconnection	Master/slave, Master/master
Basic light level function in per cent	10 – 100 %
Basic light level function percentage, from 10 %	
Basic light level function percentage, up to 100 %	
Interconnection via	Bluetooth Mesh
Colour Rendering Index CRI	= 82
R9-Farbwiedergabeindex	14,2
Optimum mounting height	2 m
Detection angle	160 °
Product category	Sensor-switched LED outdoor light
Ausführung des Betriebsgeräts	with sensor & Bluetooth

Accessories

EAN 4007841 088620

Wireless pushbutton TapDuo C

Sensor-switched LED outdoor light

L 800 SC bugfriendly

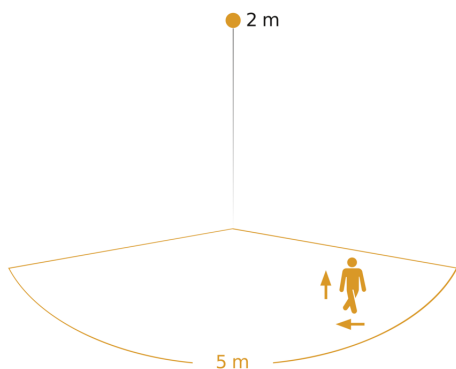
Anthracite

EAN 4007841 091361

Article number 091361

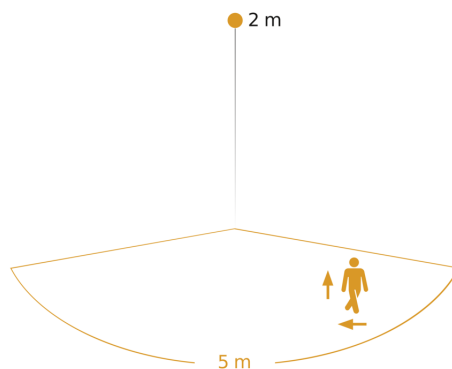


Detection Zone 1



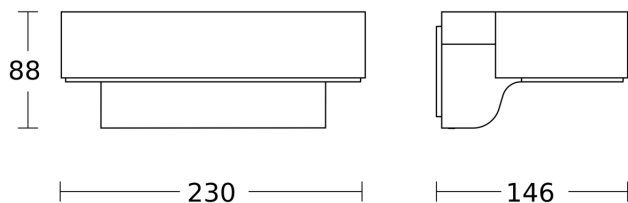
Possible mounting height: 1,80 m – 2,50 m
Orange: radial and tangential

Detection Zone 2



Possible mounting height: 1,80 m – 2,50 m
Orange: radial and tangential

Dimension Drawing



Circuit diagram Bluetooth

